



Silwood Street, London, SE16 2AZ

****Hot water and heating Included in the price**.**

A modern top floor two bedroom apartment in sought after Chamberlain Court, enjoying stunning views of the City Skyline. The property boasts a spacious open plan kitchen / living area leading into the south-west facing private balcony, two bright double bedrooms and a modern family bathroom. Conveniently situated a short walk from both underground and overground stations for a quick commute to the City, West End and Canary Wharf.

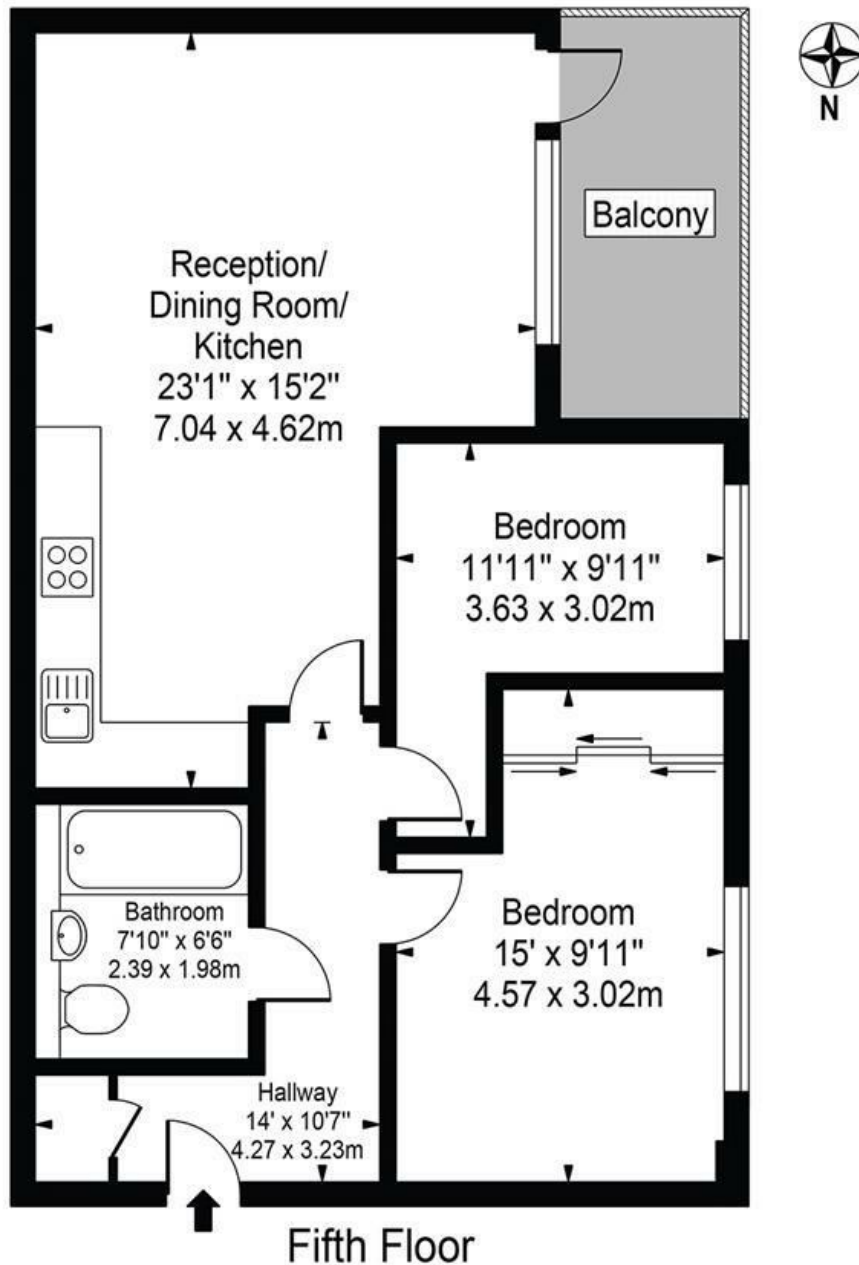
- HOT WATER AND HEATING INCLUDED
- Top Floor Two Double Bedroom Apartment
- Private Balcony
- Stunning Views
- Spacious Living Area and Modern Kitchen
- Modern Bathroom
- Bicycle Storage
- Close to Transport Links

Alex & Matteo
ESTATE AGENTS

£2,150 Per month

Chamberlain Court

Approx. Gross Internal Area 663 Sq Ft - 61.59 Sq M



For Illustration Purposes Only - Not To Scale

This floor plan should be used as a general outline for guidance only and does not constitute in whole or in part an offer or contract. Any intending purchaser or lessee should satisfy themselves by inspection, searches, enquiries and full survey as to the correctness of each statement. Any areas, measurements or distances quoted are approximate and should not be used to value a property or be the basis of any sale or let.

Energy Efficiency Rating		
	Current	Potential
Very energy efficient - lower running costs		
(92 plus) A		
(81-91) B	84	84
(69-80) C		
(55-68) D		
(39-54) E		
(21-38) F		
(1-20) G		
Not energy efficient - higher running costs		
England & Wales		
	EU Directive 2002/91/EC	